

FH₄

2+3

156m²
USEABLE AREA

7%
SLOP OF THE ROOF

9,4m
BUILDING HEIGHT

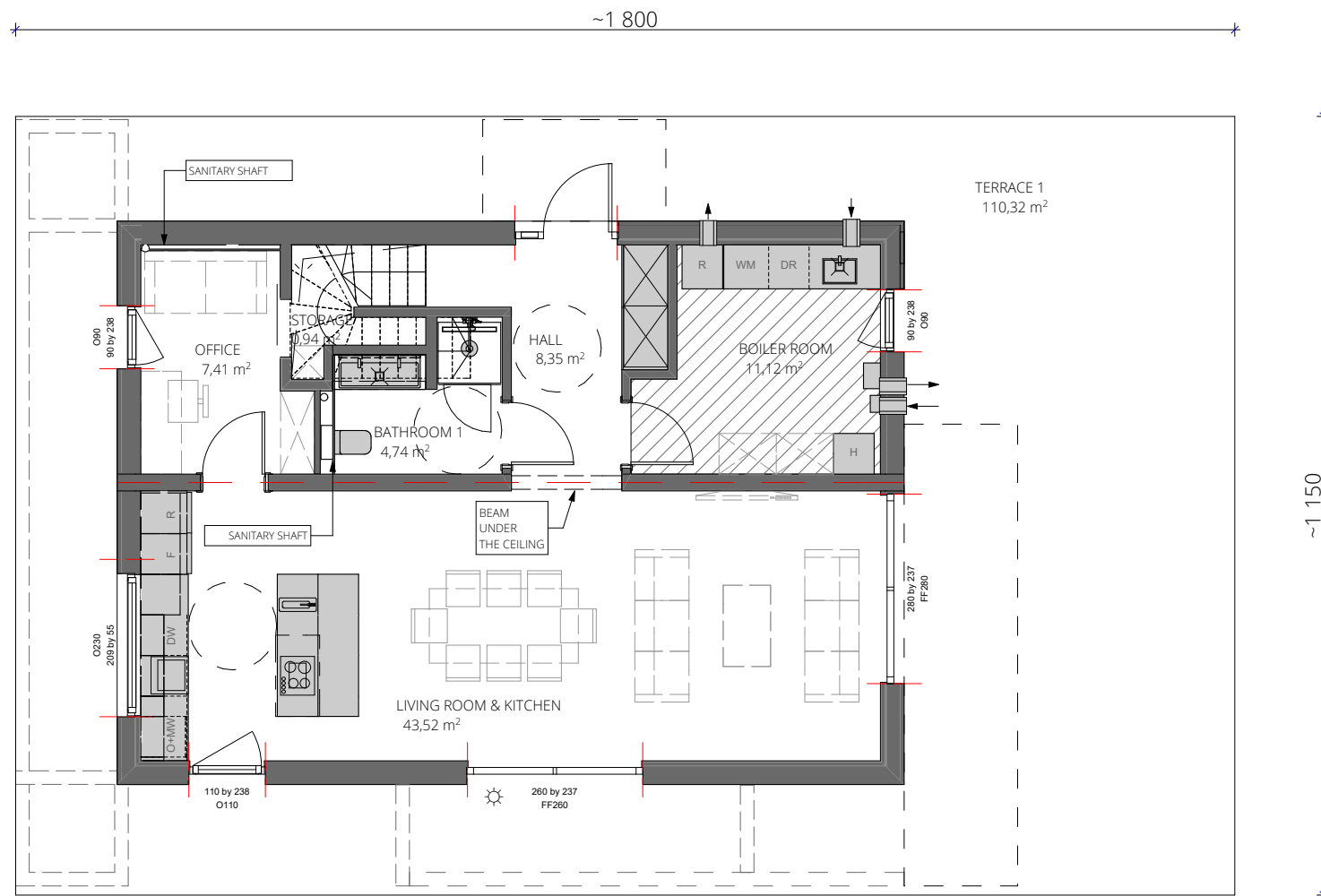
9m x 13m
DIMENSIONS OF
THE BUILDING

11,5m x 18m
DIMENSIONS OF
THE PONTOON



VIZUALIZATION SHOWS EXAMPLE OF WINDOWS AND ELEVATIONS LAYOUT. ACTUAL FLOOR PLAN MAY BE DIFFERENT FROM VIZUALIZATION

ERH
ecoreadyhouse



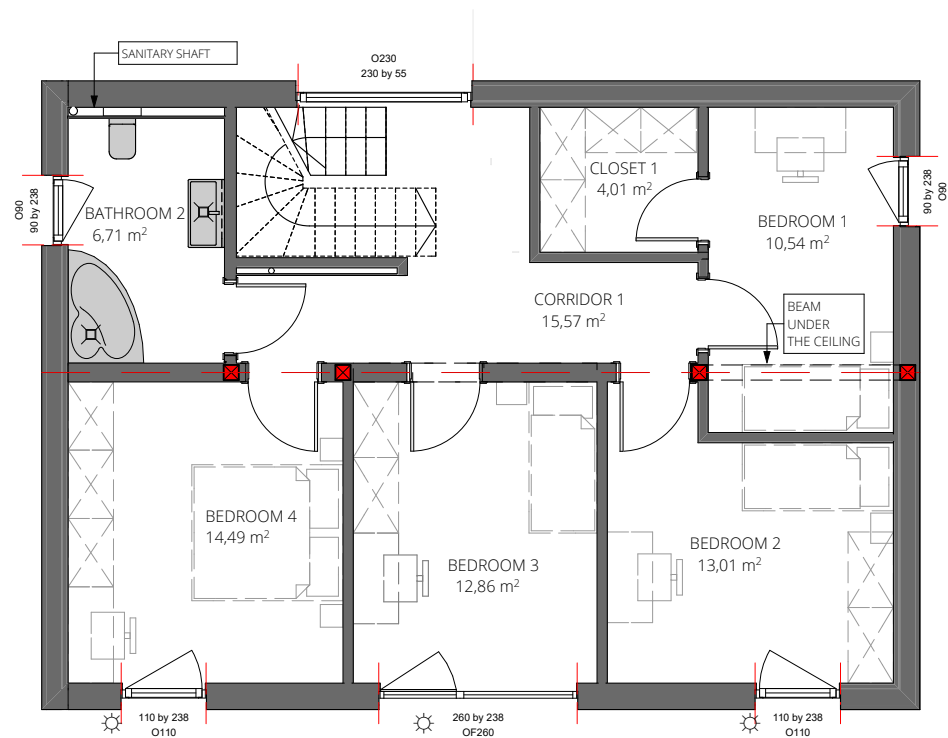
GROUND FLOOR
SCALE 1:100

- ALL ELEMENTS MARKED IN GREY COLOR ARE INCLUDED IN THE OFFER
 - BOILER ROOM SHOWS EXAMPLE OF ARRANGEMENT (FINAL LAYOUT WILL BE SHOWN IN EXECUTION PROJECT)
 - SUN PROTECTION SYSTEM
 - WINDOWS OPENING BORDERS NOT TO BE MOVED
 - CONSTRUCTION AXIS NOT TO BE MOVED
 - STRUCTURAL ELEMENTS NOT TO BE MOVED
- BATHROOM AND KITCHEN LOCATION IMPOSSIBLE TO BE MOVED IN STANDARD OFFER. ASK ARCHITECT FOR POSSIBLE MODIFICATIONS
ALL FLOOR AREAS ACCORDING TO PN-ISO 9836:1997.
POSSIBILITY OF MODIFICATIONS COULD BE CONSULTED WITH ARCHITECT

SELECT THE PRINT OPTION 100% TO PRINT A SCALE OF 1:100



FH₄



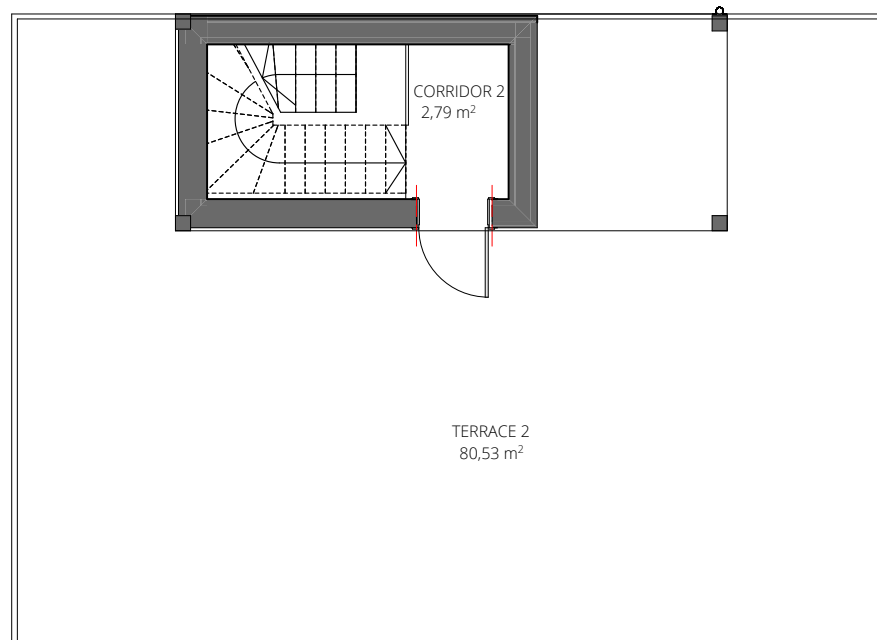
FIRST FLOOR
SCALE 1:100

-  ALL ELEMENTS MARKED IN GREY COLOR ARE INCLUDED IN THE OFFER
 -  BOILER ROOM SHOWS EXAMPLE OF ARRANGEMENT (FINAL LAYOUT WILL BE SHOWN IN EXECUTION PROJECT)
 -  SUN PROTECTION SYSTEM
 -  WINDOWS OPENING BORDERS NOT TO BE MOVED
 -  CONSTRUCTION AXIS NOT TO BE MOVED
 -  STRUCTURAL ELEMENTS NOT TO BE MOVED
- BATHROOM AND KITCHEN LOCATION IMPOSSIBLE TO BE MOVED IN STANDARD OFFER. ASK ARCHITECT FOR POSSIBLE MODIFICATIONS
ALL FLOOR AREAS ACCORDING TO PN-ISO 9836:1997.
POSSIBILITY OF MODIFICATIONS COULD BE CONSULTED WITH ARCHITECT

SELECT THE PRINT OPTION 100% TO PRINT A SCALE OF 1:100





FH₄



SECOND FLOOR

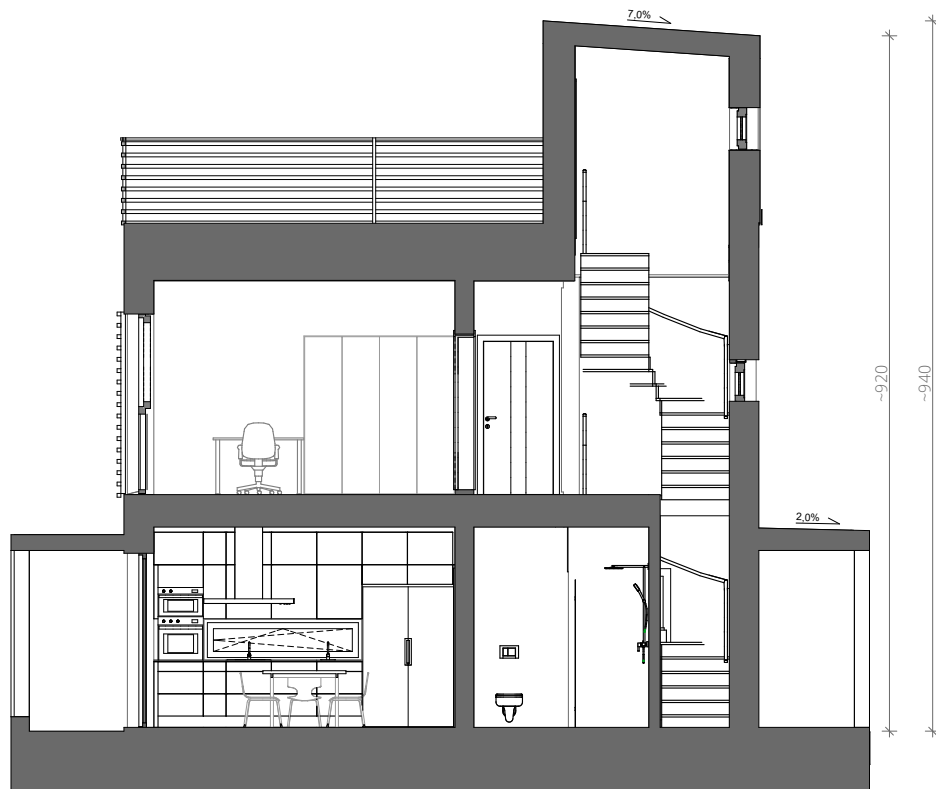
SCALE 1:100

-  ALL ELEMENTS MARKED IN GREY COLOR ARE INCLUDED IN THE OFFER
-  BOILER ROOM SHOWS EXAMPLE OF ARRANGEMENT (FINAL LAYOUT WILL BE SHOWN IN EXECUTION PROJECT)
-  SUN PROTECTION SYSTEM
-  WINDOWS OPENING BORDERS NOT TO BE MOVED
-  CONSTRUCTION AXIS NOT TO BE MOVED
-  STRUCTURAL ELEMENTS NOT TO BE MOVED
- BATHROOM AND KITCHEN LOCATION IMPOSSIBLE TO BE MOVED IN STANDARD OFFER. ASK ARCHITECT FOR POSSIBLE MODIFICATIONS
- ALL FLOOR AREAS ACCORDING TO PN-ISO 9836:1997.
- POSSIBILITY OF MODIFICATIONS COULD BE CONSULTED WITH ARCHITECT

SELECT THE PRINT OPTION 100% TO PRINT A SCALE OF 1:100



FH₄



SECTION SCALE 1:100



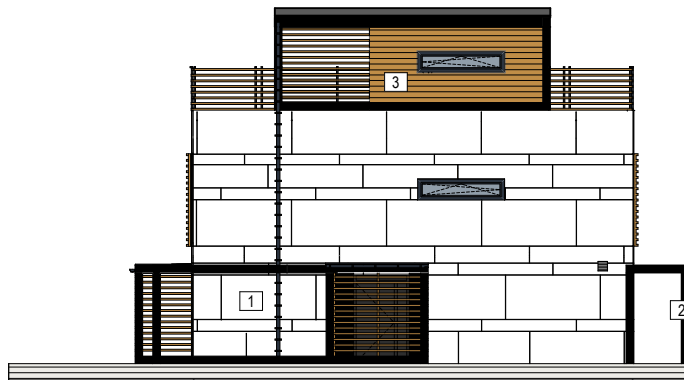
FH₄



SOUTH ELEVATION SCALE 1:200






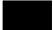
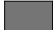
WEST ELEVATION SCALE 1:200



NORTH ELEVATION SCALE 1:200



EAST ELEVATION SCALE 1:200

- | | | | | | |
|---|-------------------------|---|----------------------|--|-------------------------------------|
|  | 1-EQUITONE TECTIVA TE00 |  | 3- THERMOWOOD |  | SEAN ROOF PROFILE CLOSE TO RAL 7042 |
|  | 2-WOODEN BOARD RAL9011 |  | WINDOW/DOOR RAL 7016 | | |

ELEVATION LAYOUT MAY CHANGE IN EXECUTION PROJECT REGARDING TECHNOLOGY RECOMMENDATIONS
 SELECT THE PRINT OPTION 100% TO PRINT A SCALE OF 1:200