

# H10<sub>B</sub>

2+4

244,7m<sup>2</sup>  
USEABLE AREA

158,5m<sup>2</sup>  
BUILD-UP AREA

2%  
SLOP OF THE ROOF

6,8m  
BUILDING HEIGHT

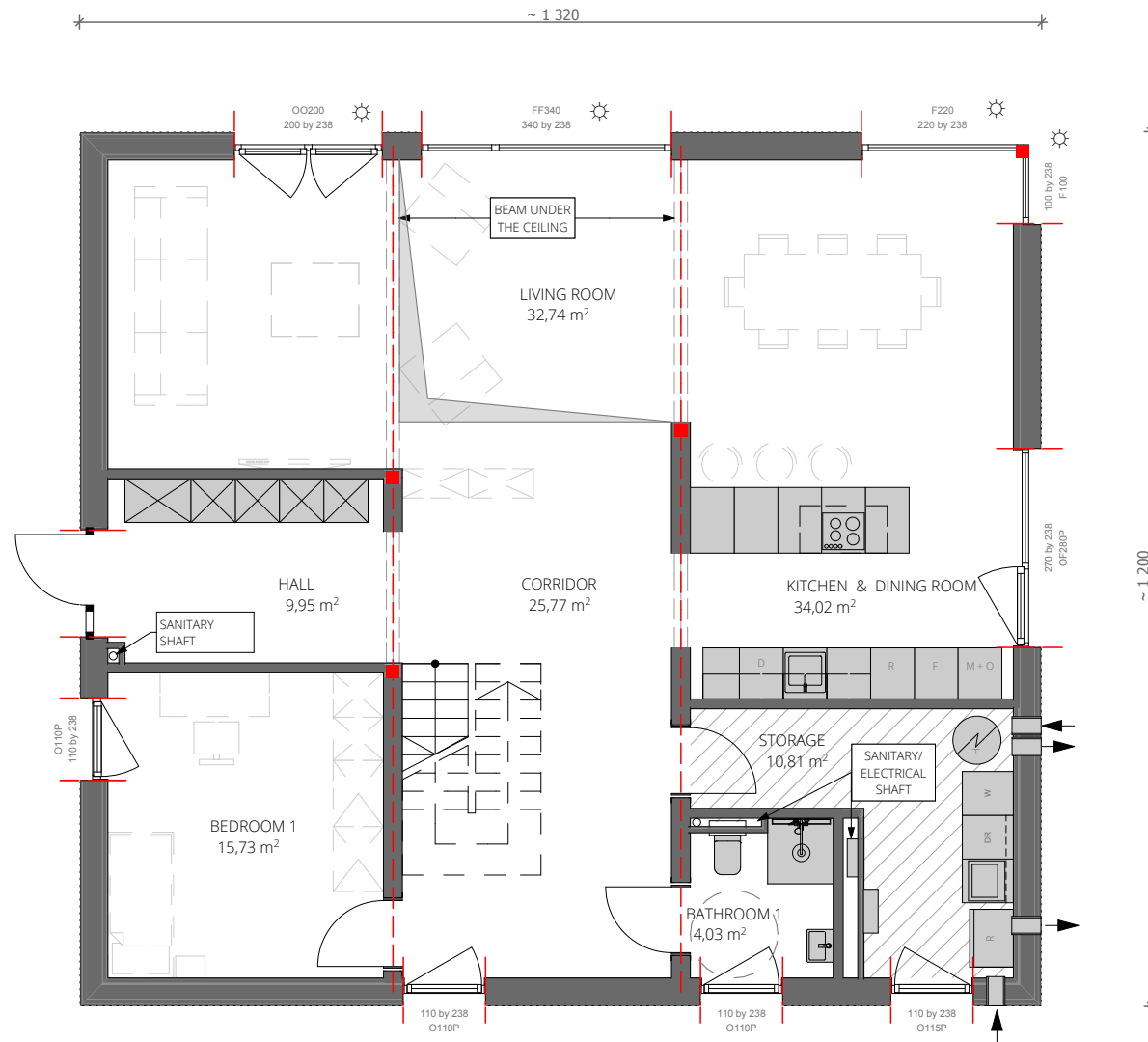
20m x 21,2m  
MIN. DIMENSIONS  
OF THE PLOT



**ERH**  
ecoreadyhouse

VIZUALIZATION SHOWS EXAMPLE OF WINDOWS AND ELEVATIONS LAYOUT. ACTUAL FLOOR PLAN MAY BE DIFFERENT FROM VIZUALIZATION

# H10<sub>B</sub>



GROUND FLOOR

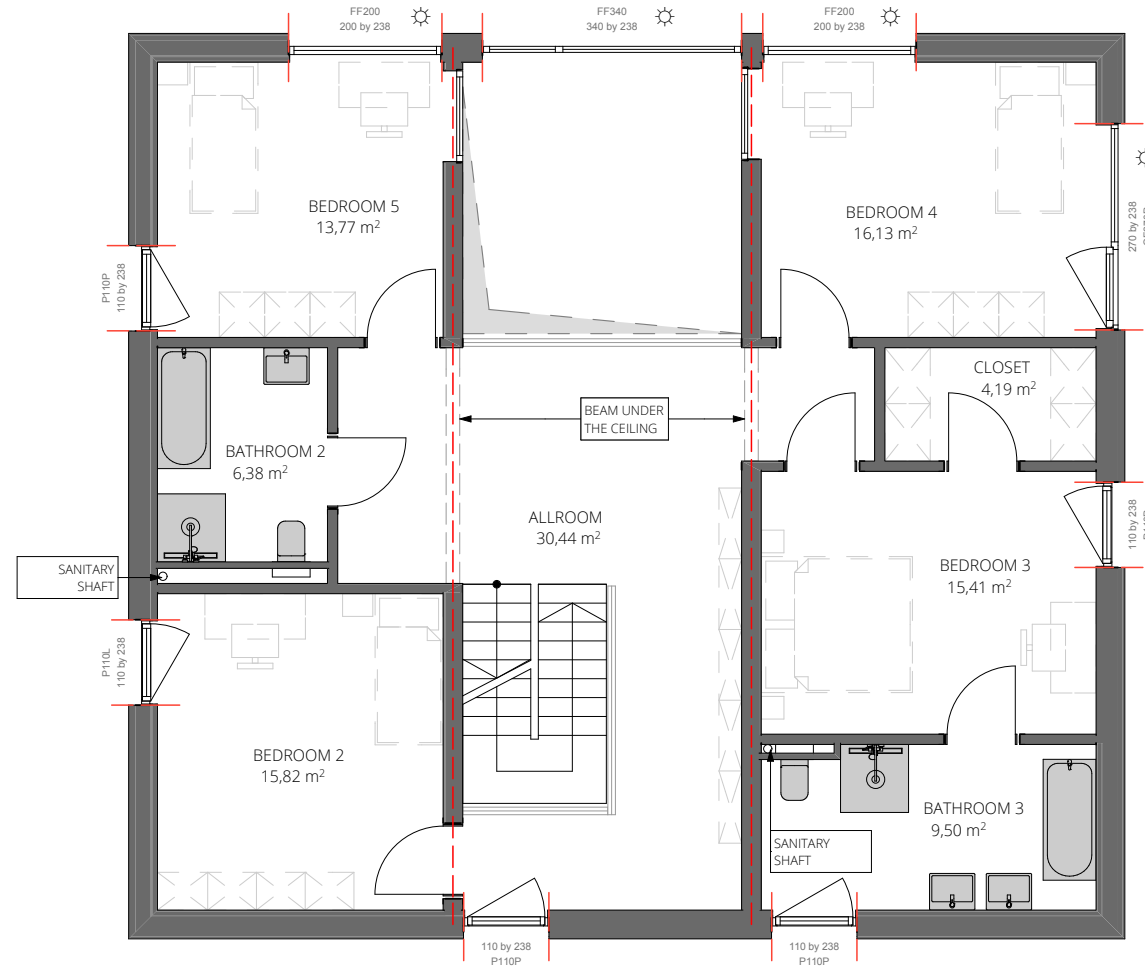
SCALE 1:100

- ALL ELEMENTS MARKED IN GREY COLOR ARE INCLUDED IN THE OFFER
  - BOILER ROOM SHOWS EXAMPLE OF ARRANGEMENT (FINAL LAYOUT WILL BE SHOWN IN EXECUTION PROJECT)
  - SUN PROTECTION SYSTEM
  - WINDOWS OPENING BORDERS NOT TO BE MOVED
  - CONSTRUCTION AXIS NOT TO BE MOVED
  - STRUCTURAL ELEMENTS NOT TO BE MOVED
- BATHROOM AND KITCHEN LOCATION IMPOSSIBLE TO BE MOVED IN STANDARD OFFER. ASK ARCHITECT FOR POSSIBLE MODIFICATIONS
- ALL FLOOR AREAS ACCORDING TO PN-ISO 9836:1997.
- POSSIBILITY OF MODIFICATIONS COULD BE CONSULTED WITH ARCHITECT






SELECT THE PRINT OPTION 100% TO PRINT A SCALE OF 1:100

# H10<sub>B</sub>



FIRST FLOOR

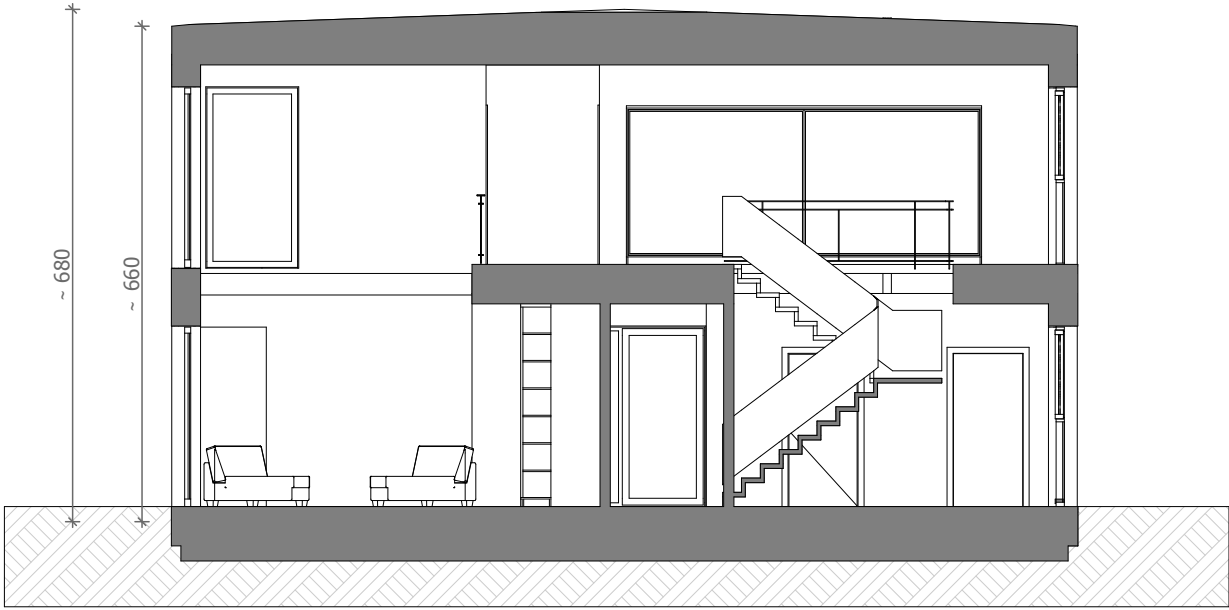
SCALE 1:100

-  ALL ELEMENTS MARKED IN GREY COLOR ARE INCLUDED IN THE OFFER
-  BOILER ROOM SHOWS EXAMPLE OF ARRANGEMENT (FINAL LAYOUT WILL BE SHOWN IN EXECUTION PROJECT)
-  SUN PROTECTION SYSTEM
-  WINDOWS OPENING BORDERS NOT TO BE MOVED
-  CONSTRUCTION AXIS NOT TO BE MOVED
-  STRUCTURAL ELEMENTS NOT TO BE MOVED
- BATHROOM AND KITCHEN LOCATION IMPOSSIBLE TO BE MOVED IN STANDARD OFFER. ASK ARCHITECT FOR POSSIBLE MODIFICATIONS
- ALL FLOOR AREAS ACCORDING TO PN-ISO 9836:1997.
- POSSIBILITY OF MODIFICATIONS COULD BE CONSULTED WITH ARCHITECT



SELECT THE PRINT OPTION 100% TO PRINT A SCALE OF 1:100

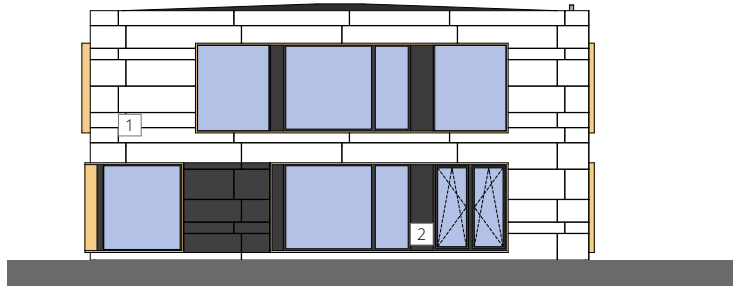
# H10<sub>B</sub>



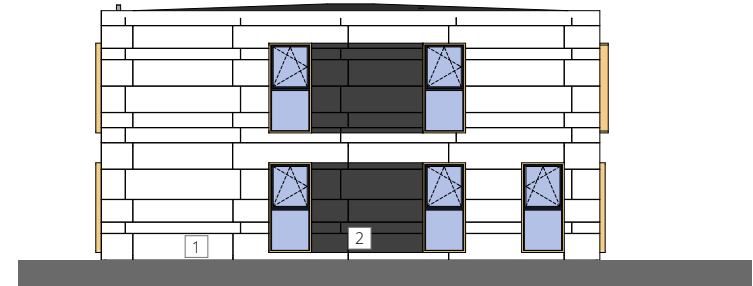
SECTION SCALE 1:100



# H10<sub>B</sub>



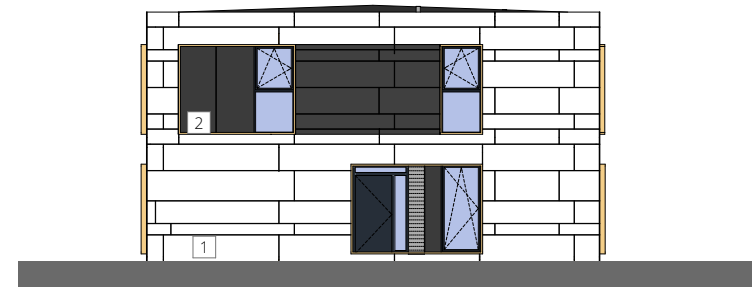
SOUTH ELEVATION SCALE 1:200



NORTH ELEVATION SCALE 1:200



WEST ELEVATION SCALE 1:200



EAST ELEVATION SCALE 1:200

1-EQUITONE TECTIVA TE00

WINDOWS FRAME CLOSE TO RAL 8001

2-EQUITONE NATURA N251

DOOR / WINDOW RAL7016