

H11

2+3

154m²
USEABLE AREA

137,5m²
BUILD-UP AREA

40°
SLOP OF THE ROOF

8,4m
BUILDING HEIGHT

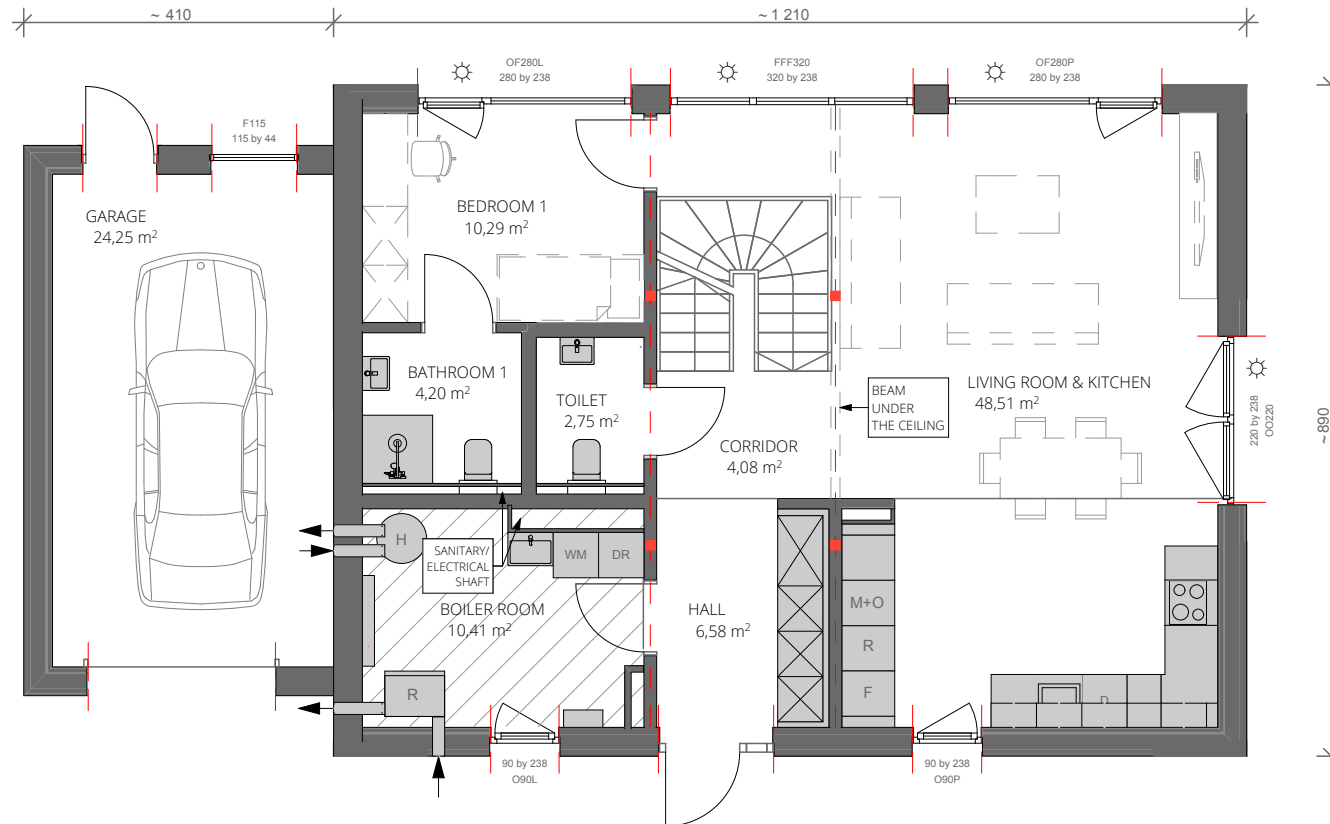
17mx24,5m
MIN. DIMENSIONS
OF THE PLOT



ERH
ecoreadyhouse




VIZUALIZATION SHOWS EXAMPLE OF WINDOWS AND ELEVATIONS LAYOUT. ACTUAL FLOOR PLAN MAY BE DIFFERENT FROM VIZUALIZATION

H11



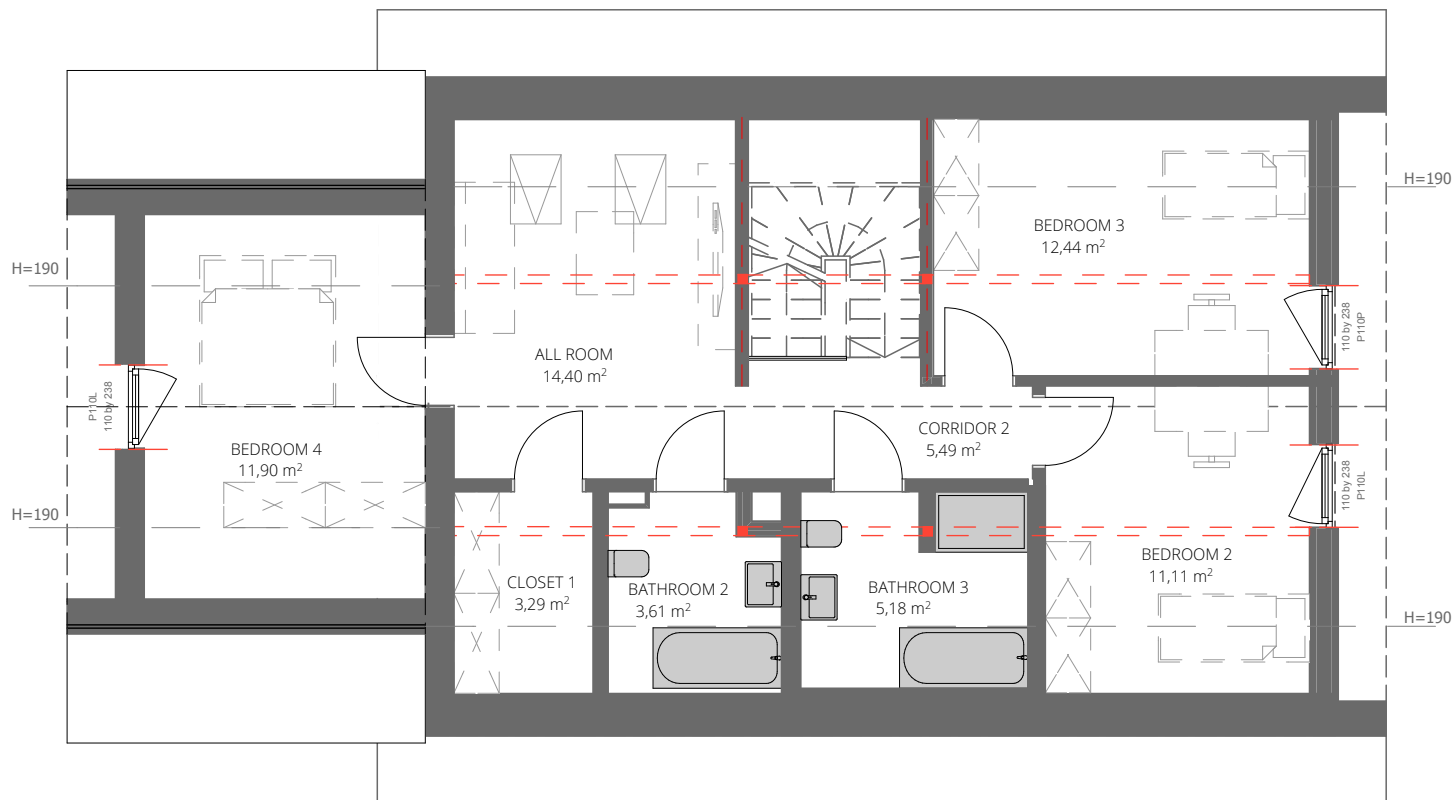
GROUND FLOOR

SCALE 1:100




-  ALL ELEMENTS MARKED IN GREY COLOR ARE INCLUDED IN THE OFFER
-  BOILER ROOM SHOWS EXAMPLE OF ARRANGEMENT (FINAL LAYOUT WILL BE SHOWN IN EXECUTION PROJECT)
-  SUN PROTECTION SYSTEM
-  WINDOWS OPENING BORDERS NOT TO BE MOVED
-  CONSTRUCTION AXIS NOT TO BE MOVED
-  STRUCTURAL ELEMENTS NOT TO BE MOVED
- BATHROOM AND KITCHEN LOCATION IMPOSSIBLE TO BE MOVED IN STANDARD OFFER. ASK ARCHITECT FOR POSSIBLE MODIFICATIONS
- ALL FLOOR AREAS ACCORDING TO PN-ISO 9836:1997.
- POSSIBILITY OF MODIFICATIONS COULD BE CONSULTED WITH ARCHITECT

SELECT THE PRINT OPTION 100% TO PRINT A SCALE OF 1:100

H11



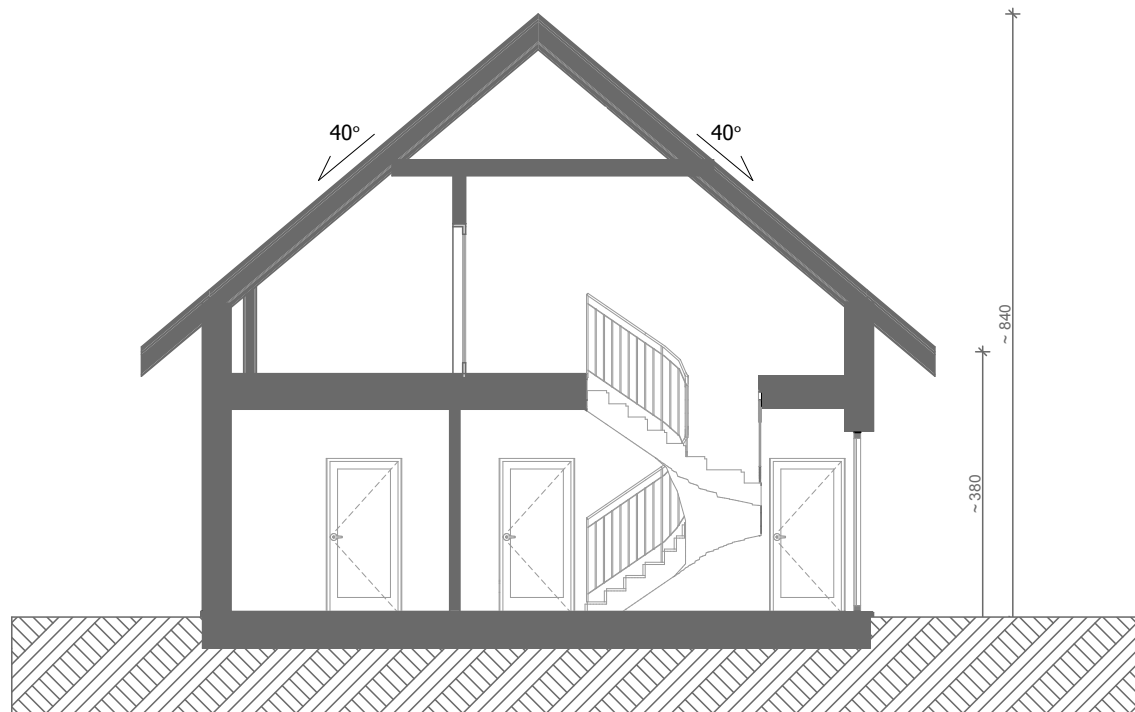
FIRST FLOOR
SCALE 1:100

-  ALL ELEMENTS MARKED IN GREY COLOR ARE INCLUDED IN THE OFFER
-  BOILER ROOM SHOWS EXAMPLE OF ARRANGEMENT (FINAL LAYOUT WILL BE SHOWN IN EXECUTION PROJECT)
-  SUN PROTECTION SYSTEM
-  WINDOWS OPENING BORDERS NOT TO BE MOVED
-  CONSTRUCTION AXIS NOT TO BE MOVED
-  STRUCTURAL ELEMENTS NOT TO BE MOVED
- BATHROOM AND KITCHEN LOCATION IMPOSSIBLE TO BE MOVED IN STANDARD OFFER. ASK ARCHITECT FOR POSSIBLE MODIFICATIONS
- ALL FLOOR AREAS ACCORDING TO PN-ISO 9836:1997.
- POSSIBILITY OF MODIFICATIONS COULD BE CONSULTED WITH ARCHITECT



SELECT THE PRINT OPTION 100% TO PRINT A SCALE OF 1:100

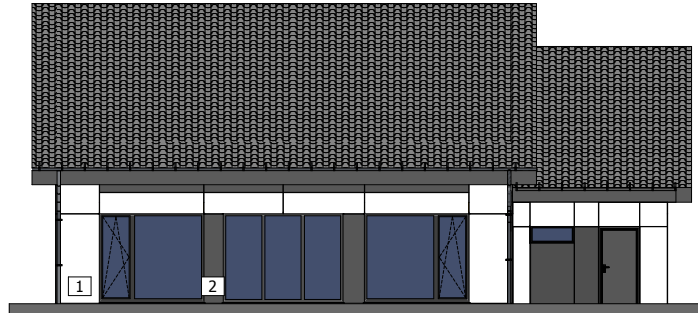
H11



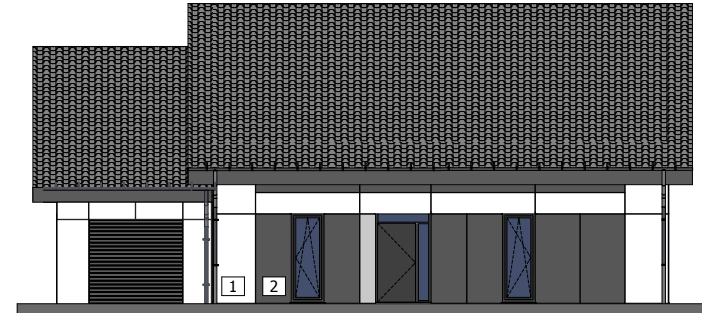
SECTION SCALE 1:100



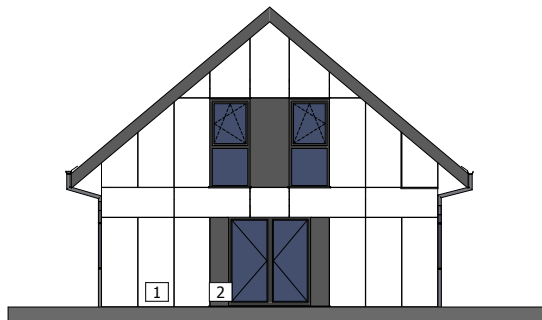
H11



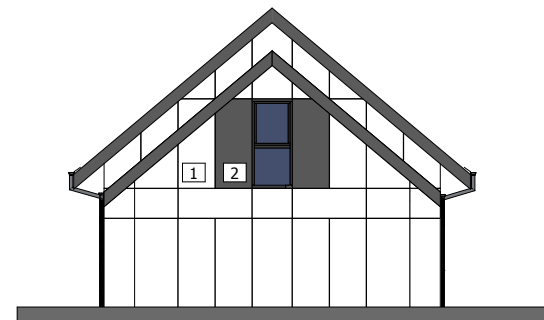
SOUTH ELEVATION SCALE 1:200



NORTH ELEVATION SCALE 1:200



WEST ELEVATION SCALE 1:200



EAST ELEVATION SCALE 1:200

- | | | | |
|---|-------------------------|---|------------------------|
|  | 1-EQUITONE TECTIVA TE00 |  | ROOF ANTHRACITE ANGOBE |
|  | 2-EQUITONE NATURA N251 |  | WINDOW/DOOR RAL7016 |