

H10_A

2+4

243,8m²
USEABLE AREA

158,5m²
BUILD-UP AREA

2%
SLOP OF THE ROOF

6,8m
BUILDING HEIGHT

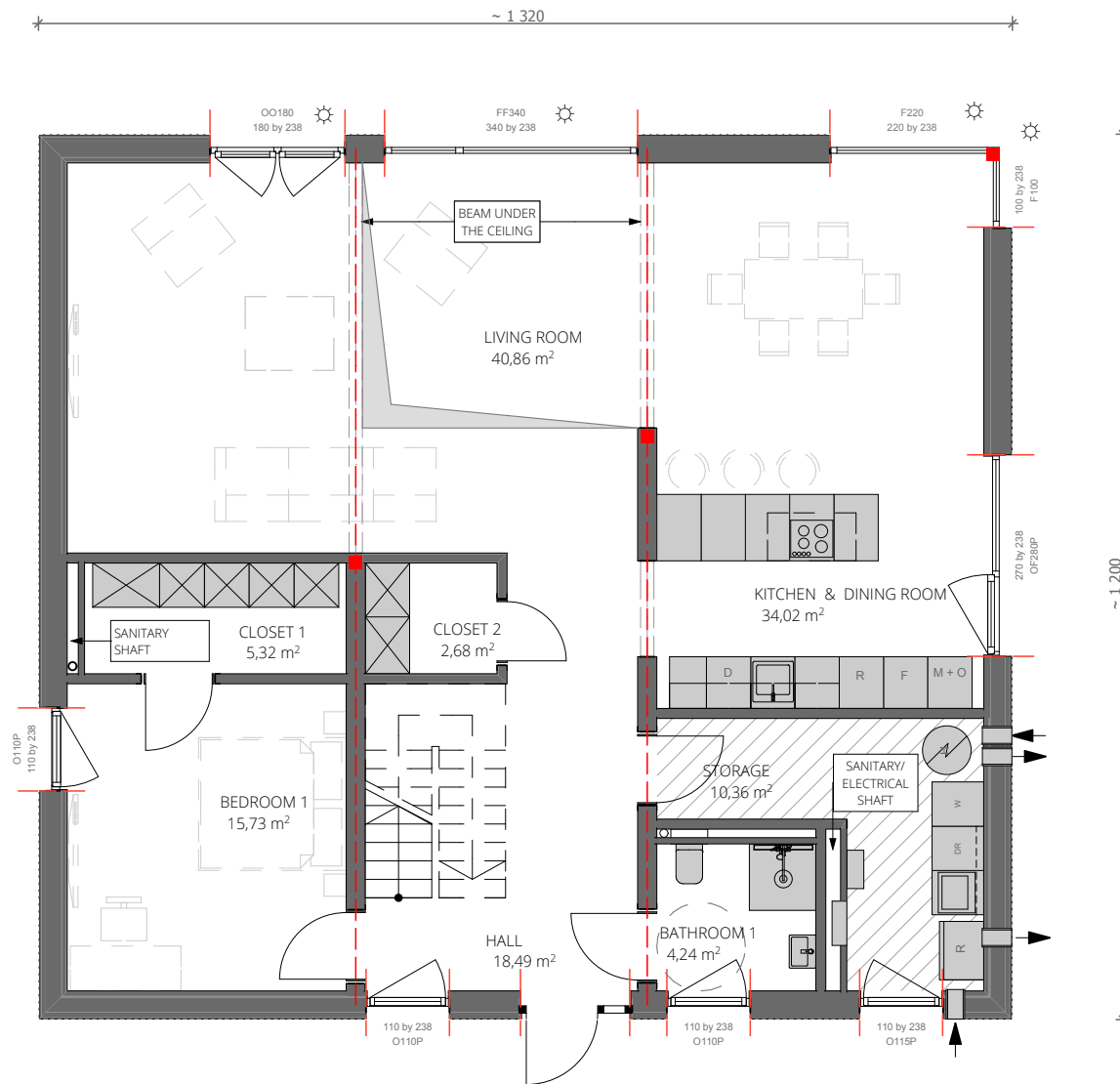
20m x 21,2m
MIN. DIMENSIONS
OF THE PLOT



ERH
ecoreadyhouse

VIZUALIZATION SHOWS EXAMPLE OF WINDOWS AND ELEVATIONS LAYOUT. ACTUAL FLOOR PLAN MAY BE DIFFERENT FROM VIZUALIZATION

H10_A

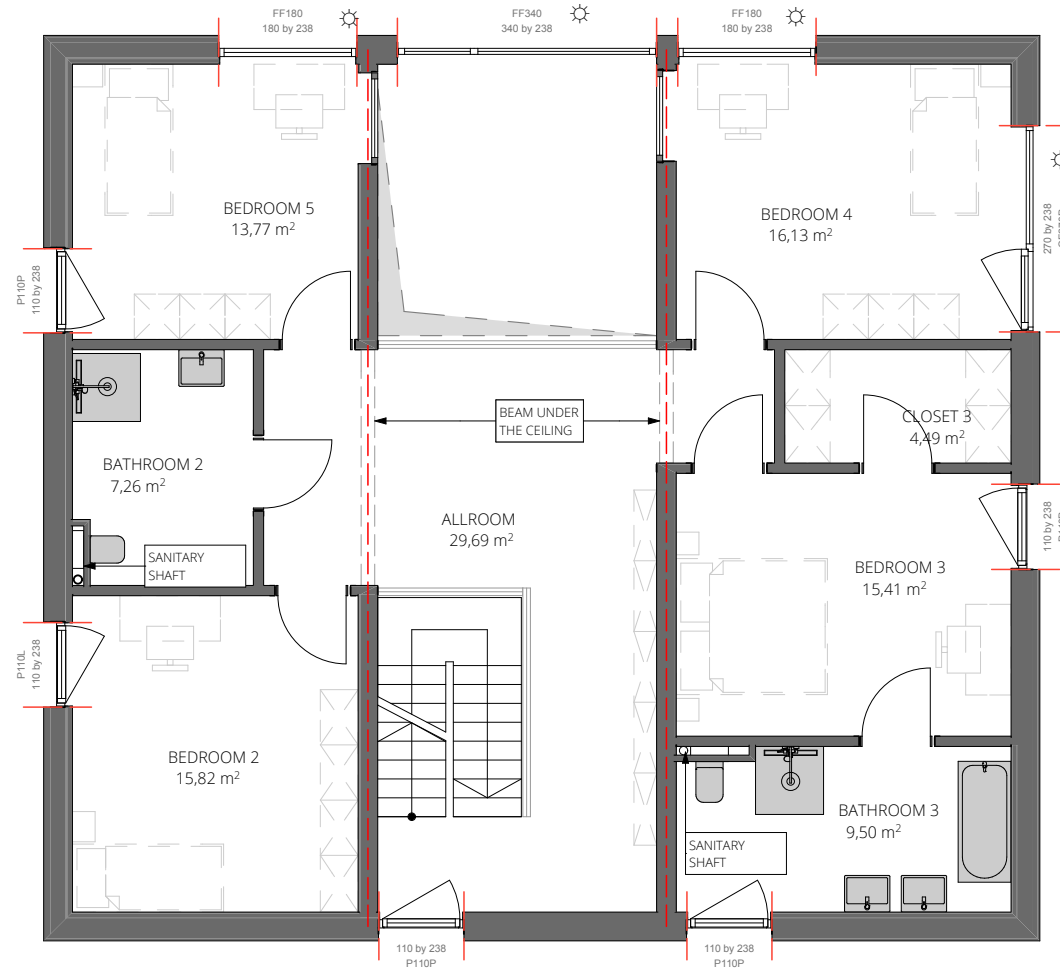


GROUND FLOOR
SECTION 1:100

- ALL ELEMENTS MARKED IN GREY COLOR ARE INCLUDED IN THE OFFER
- BOILER ROOM SHOWS EXAMPLE OF ARRANGEMENT (FINAL LAYOUT WILL BE SHOWN IN EXECUTION PROJECT)
- SUN PROTECTION SYSTEM
- WINDOWS OPENING BORDERS NOT TO BE MOVED
- CONSTRUCTION AXIS NOT TO BE MOVED
- STRUCTURAL ELEMENTS NOT TO BE MOVED
- BATHROOM AND KITCHEN LOCATION IMPOSSIBLE TO BE MOVED IN STANDARD OFFER. ASK ARCHITECT FOR POSSIBLE MODIFICATIONS
- ALL FLOOR AREAS ACCORDING TO PN-ISO 9836:1997.
- POSSIBILITY OF MODIFICATIONS COULD BE CONSULTED WITH ARCHITECT

SELECT THE PRINT OPTION 100% TO PRINT A SCALE OF 1:100

H10_A



FIRST FLOOR

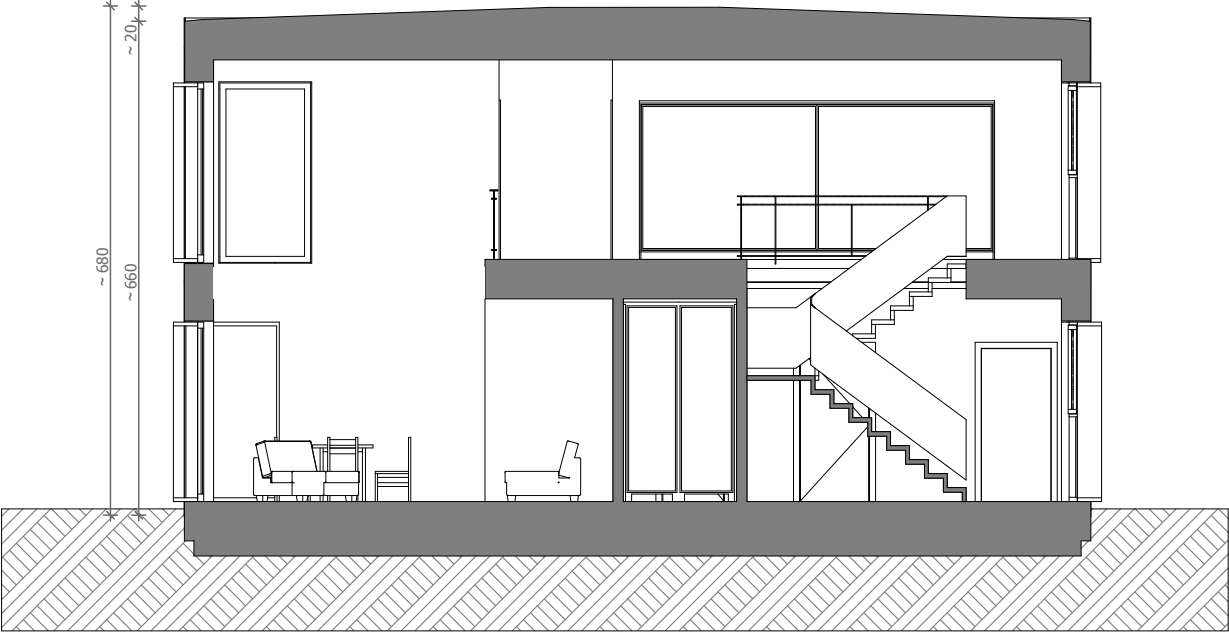
SCALE 1:100

-  ALL ELEMENTS MARKED IN GREY COLOR ARE INCLUDED IN THE OFFER
-  BOILER ROOM SHOWS EXAMPLE OF ARRANGEMENT (FINAL LAYOUT WILL BE SHOWN IN EXECUTION PROJECT)
-  SUN PROTECTION SYSTEM
-  WINDOWS OPENING BORDERS NOT TO BE MOVED
-  CONSTRUCTION AXIS NOT TO BE MOVED
-  STRUCTURAL ELEMENTS NOT TO BE MOVED
- BATHROOM AND KITCHEN LOCATION IMPOSSIBLE TO BE MOVED IN STANDARD OFFER. ASK ARCHITECT FOR POSSIBLE MODIFICATIONS
- ALL FLOOR AREAS ACCORDING TO PN-ISO 9836:1997.
- POSSIBILITY OF MODIFICATIONS COULD BE CONSULTED WITH ARCHITECT



SELECT THE PRINT OPTION 100% TO PRINT A SCALE OF 1:100

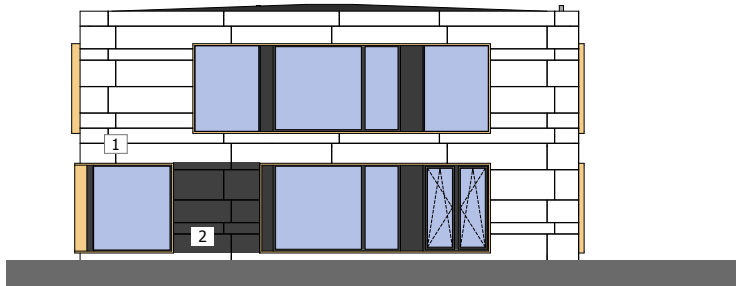
H10_A



SECTION SCALE 1:100



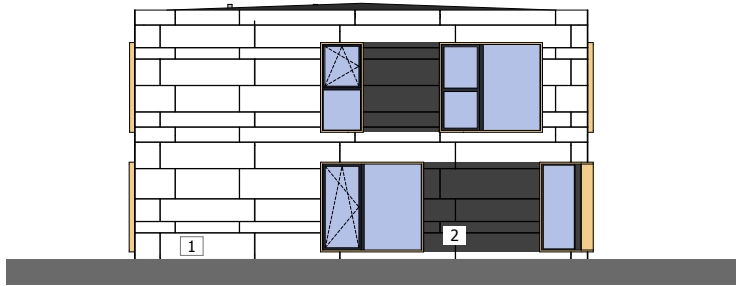
H10_A



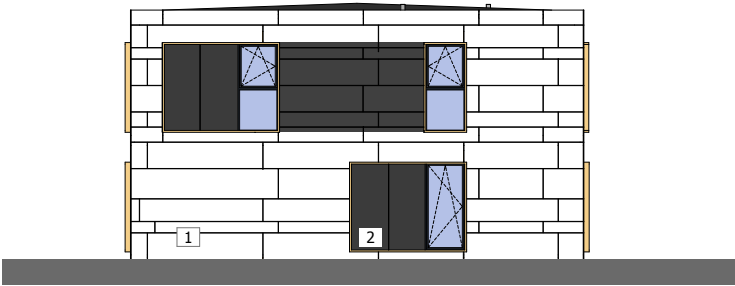
SOUTH ELEVATION SCALE 1:200



NORTH ELEVATION SCALE 1:200



WEST ELEVATION SCALE 1:200



EAST ELEVATION SCALE 1:200

- 1-EQUITONE TECTIVA TE00
 - 2-EQUITONE NATURA N251
- WINDOWS FRAME CLOSE TO RAL 8001
 - DOOR / WINDOW RAL7016



ELEVATION LAYOUT MAY CHANGE IN EXECUTION PROJECT REGARDING TECHNOLOGY RECOMMENDATIONS
 SELECT THE PRINT OPTION 100% TO PRINT A SCALE OF 1:200