

H1_B

2+3

142m²
USEABLE AREA

107,5m²
BUILD-UP AREA

40°
SLOP OF THE ROOF

8,3m
BUILDING HEIGHT

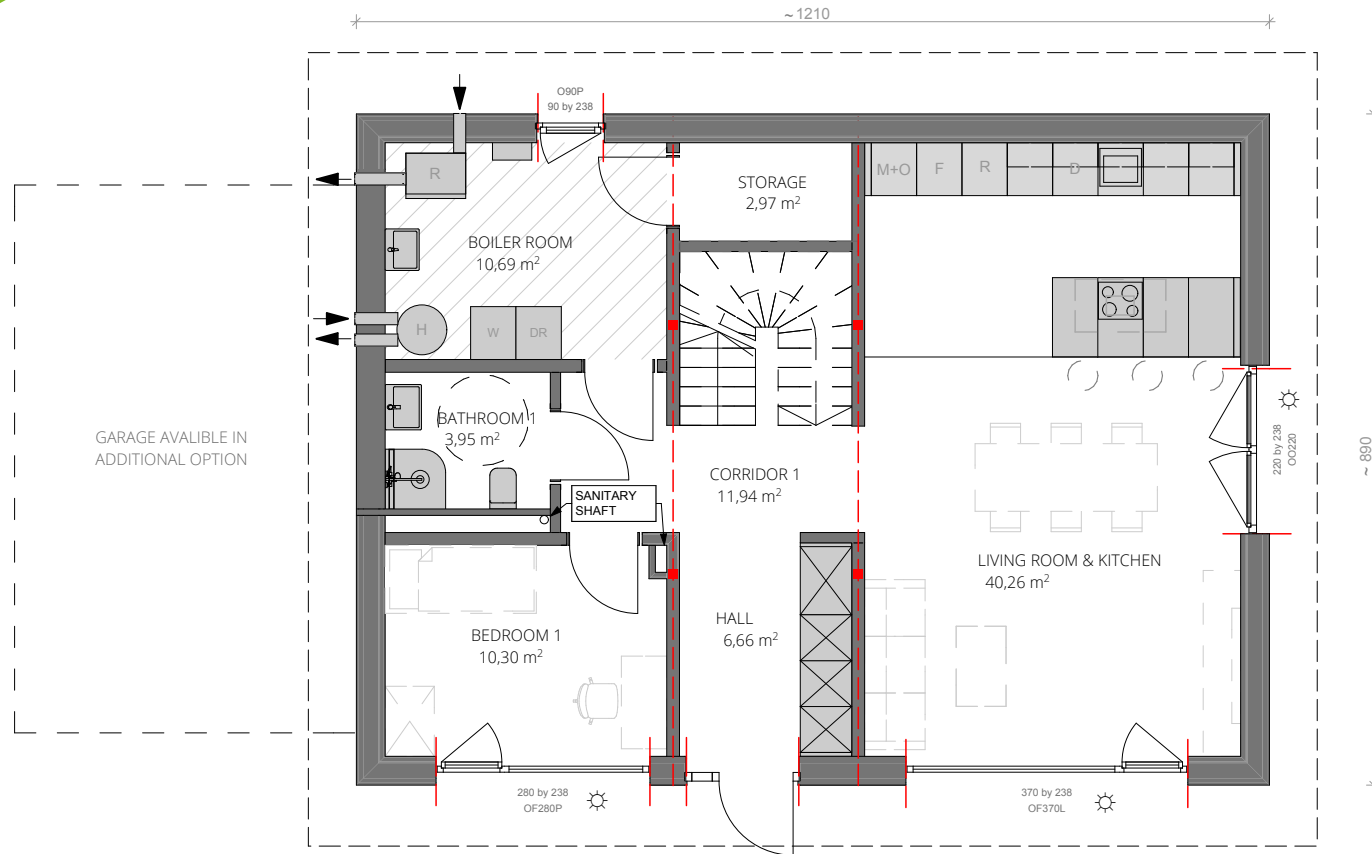
17m x 20m
MIN. DIMENSIONS
OF THE PLOT





ERH
ecoreadyhouse

VIZUALIZATION SHOWS EXAMPLE OF WINDOWS AND ELEVATIONS LAYOUT. ACTUAL FLOOR PLAN MAY BE DIFFERENT FROM VIZUALIZATION

H1_B



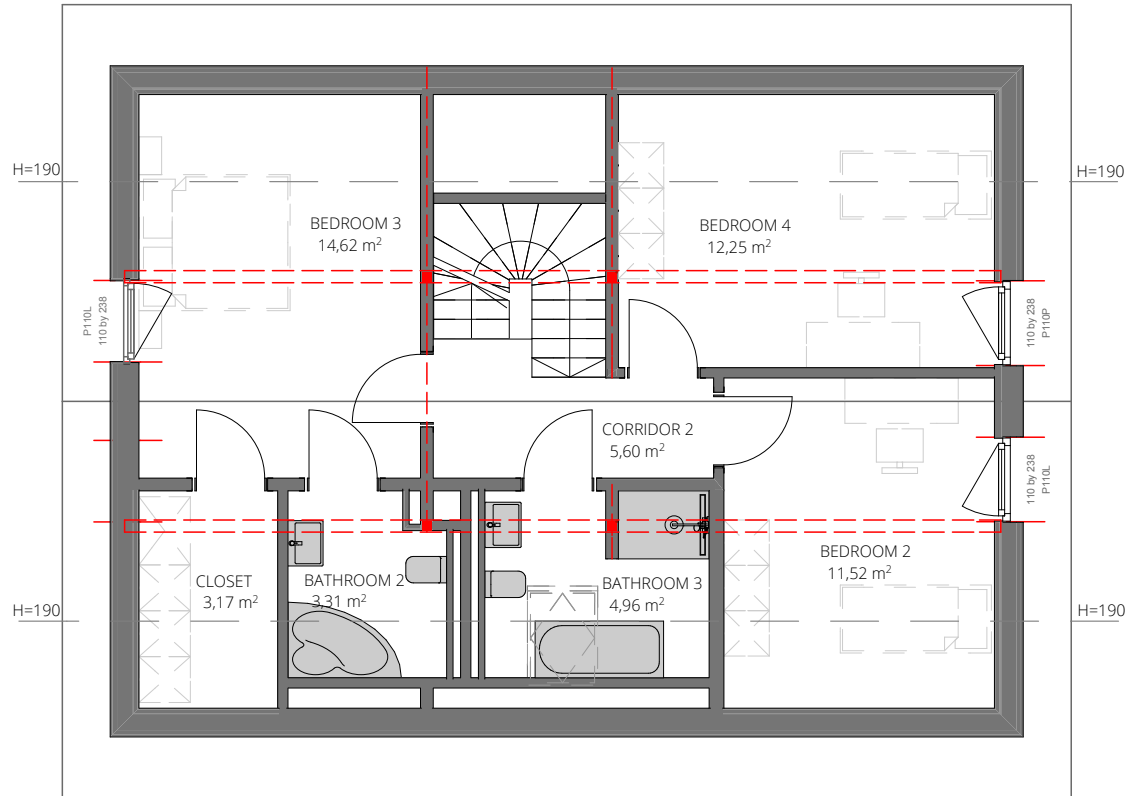
GROUND FLOOR
SCALE 1:100

-  ALL ELEMENTS MARKED IN GREY COLOR ARE INCLUDED IN THE OFFER
 -  BOILER ROOM SHOWS EXAMPLE OF ARRANGEMENT (FINAL LAYOUT WILL BE SHOWN IN EXECUTION PROJECT)
 -  SUN PROTECTION SYSTEM
 -  WINDOWS OPENING BORDERS NOT TO BE MOVED
 -  CONSTRUCTION AXIS NOT TO BE MOVED
 -  STRUCTURAL ELEMENTS NOT TO BE MOVED
- BATHROOM AND KITCHEN LOCATION IMPOSSIBLE TO BE MOVED IN STANDARD OFFER. ASK ARCHITECT FOR POSSIBLE MODIFICATIONS
- ALL FLOOR AREAS ACCORDING TO PN-ISO 9836:1997.
- POSSIBILITY OF MODIFICATIONS COULD BE CONSULTED WITH ARCHITECT





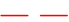
SELECT THE PRINT OPTION 100% TO PRINT A SCALE OF 1:100



H1_B



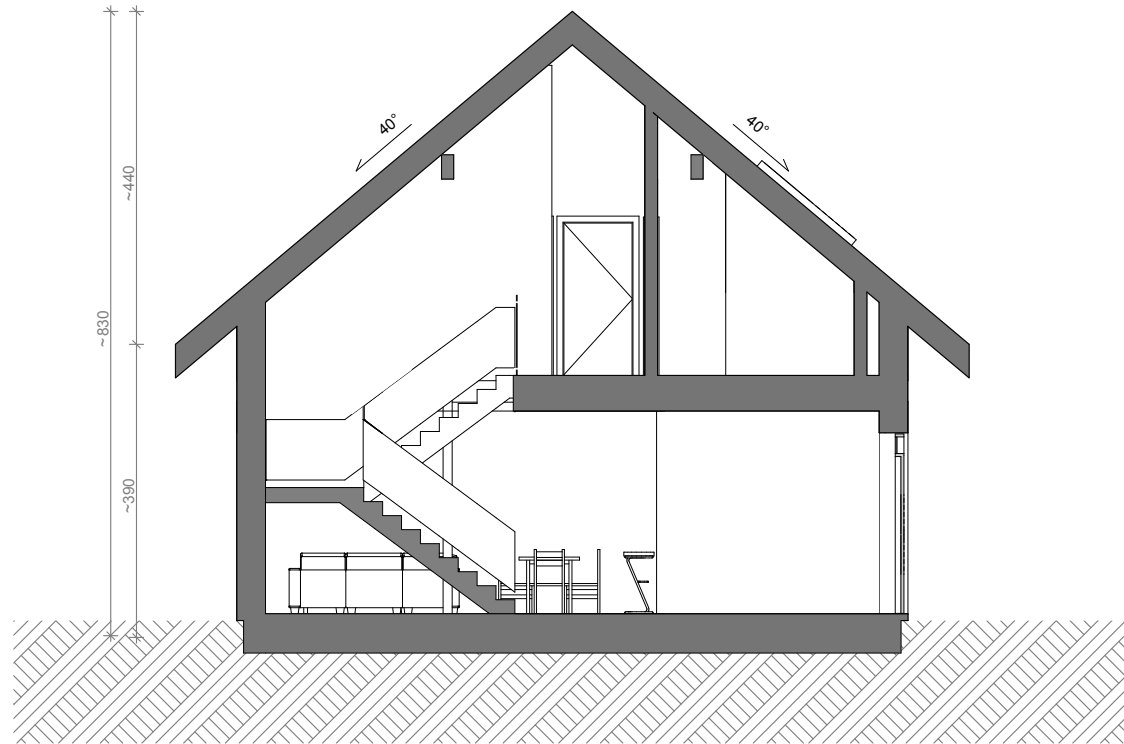
FIRST FLOOR
SCALE 1:100

-  ALL ELEMENTS MARKED IN GREY COLOR ARE INCLUDED IN THE OFFER
 -  BOILER ROOM SHOWS EXAMPLE OF ARRANGEMENT (FINAL LAYOUT WILL BE SHOWN IN EXECUTION PROJECT)
 -  SUN PROTECTION SYSTEM
 -  WINDOWS OPENING BORDERS NOT TO BE MOVED
 -  CONSTRUCTION AXIS NOT TO BE MOVED
 -  STRUCTURAL ELEMENTS NOT TO BE MOVED
- BATHROOM AND KITCHEN LOCATION IMPOSSIBLE TO BE MOVED IN STANDARD OFFER. ASK ARCHITECT FOR POSSIBLE MODIFICATIONS
ALL FLOOR AREAS ACCORDING TO PN-ISO 9836:1997.
POSSIBILITY OF MODIFICATIONS COULD BE CONSULTED WITH ARCHITECT



SELECT THE PRINT OPTION 100% TO PRINT A SCALE OF 1:100

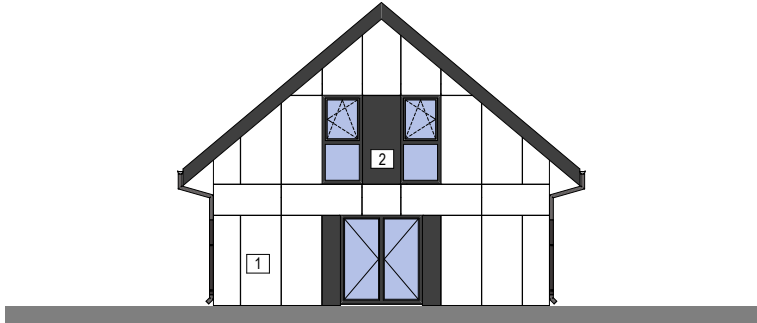
H1_B



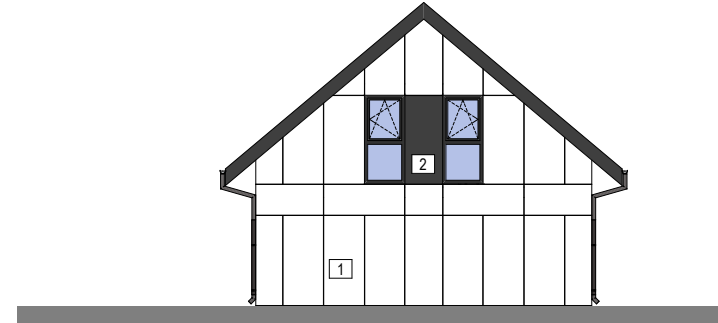
SECTION SCALE 1:100



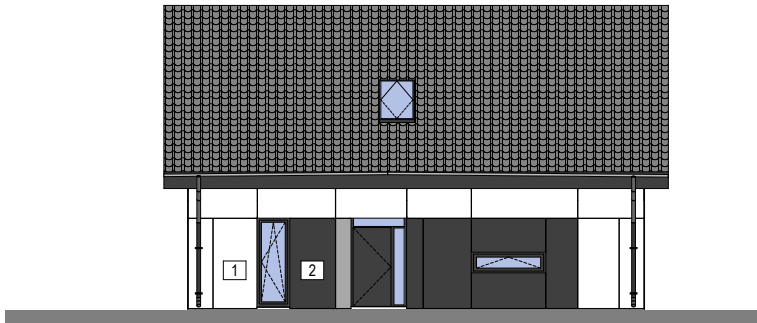
H1_B



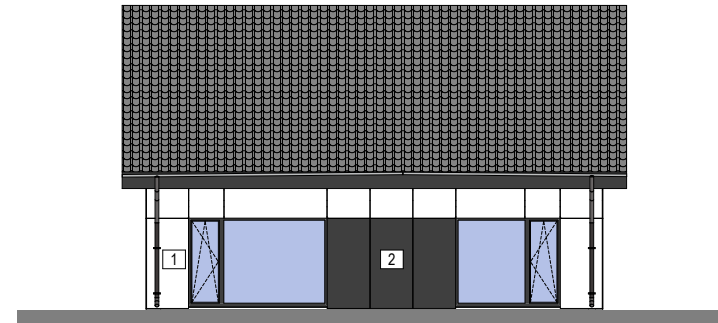
WEST ELEVATION SCALE 1:200





EAST ELEVATION SCALE 1:200



NORTH ELEVATION SCALE 1:200



SOUTH ELEVATION SCALE 1:200

- | | | |
|---|---|---|
|  1-EQUITONE TECTIVA TE00 |  DOOR RAL 7016 |  ROOF ANTHRACITE ANGOBE |
|  2-EQUITONE NATURA N251 |  WINDOW RAL 7016 | |